

***The Solid Waste Institute  
of Northeast Oklahoma  
provides free assistance with the  
Planning  
Process  
Publicity  
and  
Production  
of a  
Community Waste Tire Collection.***

***For more information, please  
contact:***


**Solid Waste Institute of  
Northeast Oklahoma  
111 W. Shawnee  
Tahlequah, OK 74464-3623**

**Tel. (918) 456-0116  
Fax (918) 456-3534**

**Website: [www.swino.org](http://www.swino.org)**

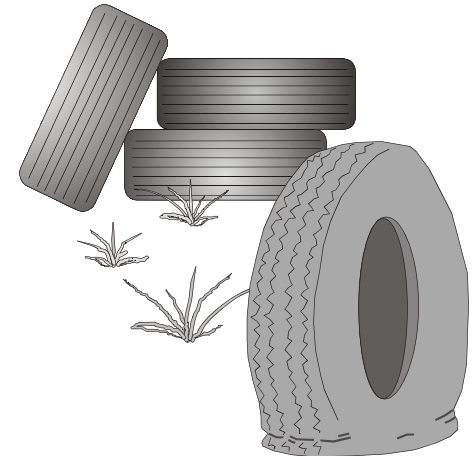
**This public service program is supported  
by funding from the Oklahoma  
Department of Environmental Quality  
and from Conoco-Phillips.**




 **printed on recycled paper**

**Solid Waste Institute  
of Northeast Oklahoma  
111 West Shawnee  
Tahlequah, OK 74464-3623**

# **Community Waste Tire Collections**



## Did You Know..?

- Each year Oklahomans discard over 3 million used automobile tires.
  - Proper disposal is important! Open tire dumps present serious health risks that can result from toxic tire fires and from the proliferation of disease-carrying mosquitoes.
- 
- Oklahoma's successful, state-supported *Waste Tire Recycling Program* helps ensure that most used tires are collected by tire retailers at the time of replacement. These are recycled or reused in productive ways.
  - The program is funded by a \$1.00 per tire fee collected on the retail sale of new tires.
  - And did you know that the *Waste Tire Recycling Program* helps Oklahoma's citizens meet the need to recycle those old spares or other odd tires often found around the home?
  - Well, it does and here's how ...**

## Community Waste Tire Collections

### What Is It?

- A **Community Waste Tire Collection** is a special, state-authorized waste collection event held for the benefit of the general public.
- The collections allow people to dispose of any type of used motor vehicle tire other than tractor or large implement tires.

### Who Can Participate?

- Any person needing to discard small quantities of waste tires other than retail tire dealers or tire repair shops.

### Is There A Cost ?

- No. Tire disposal is **FREE** to the public. The recycling of tires collected through a Community Waste Tire Collection is paid for by the state's Waste Tire Recycling Program.

### Is State Approval Required?

- Yes. Each collection event must be pre-authorized by the Oklahoma Dept. of Environmental Quality.



### Are There Any Restrictions?

- A few....
  - No tractor or large implement tires.
  - No golf cart or mower tires.
  - No tires on metal rims.
  - No tire dealers.

### How Often Can We Hold a Collection?

- Generally, it's best to plan on one or two tire collections a year to coincide with community clean-up days.

### What Arrangements Are Needed?

- Successful waste tire collections require....
  - Coordinated services from a certified waste tire transporter and recycler.
  - A good collection site.
  - News releases, flyers, and other event promotion materials.
  - Volunteers to help collect tires.

### Is Help Available?

**Yes !** p